

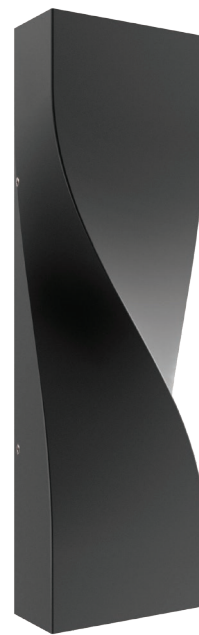
Exterior Lighting

GIRO SERIES

- Exterior surface mounted up/down LED wall lights
- Input voltage: 100-240V AC 50/60Hz
- Inbuilt Constant Current driver included
- Housing & heatsink: aluminium
- Diffuser: PC
- Back plate: aluminium
- 2 stickers included which allow narrowing of beam angle at both or either end
- Beam angle: without sticker is 117° and with the sticker is 68.9°
- LED chips: 2pcs 5050
- Ambient temperature: -20 to 50°C
- Not suitable for dimming
- Suitable for 2 way switching
- Suitable for use with PIR sensor

30,000hr Lifetime	117° Beam Angle	IP65 Rated	3YEAR Replacement Warranty
-------------------	-----------------	-------------------	-----------------------------------

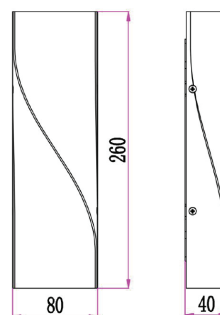
Part No.	GIRO01 & GIRO02
Description	WALL LED S/M Dark Grey / WH up/down Twisted Rectangle
Material	Aluminium & PC
Kelvin	3000K
Lumens	570lm
Wattage	11W
LED chips	2PCS 5050
Power factor	>0.8
CRI	>80
Dimensions	Please see line drawings
Back plate	209x75x17mm
Weight	0.8kg
Box	27x9x5cm
Carton QTY	1/12



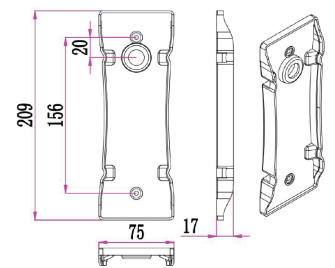
GIRO01 (Dark grey)



GIRO02 (White)



Line drawing



Back plate